



Easy-Commission QuickBooks® Import Guide

Version 2.1

Contents

1. Introduction
2. Import Diagrams
 - a. Data mapping diagram
 - b. Conversion diagram
 - c. Execution flow diagram
3. Prerequisites
4. Steps involved in QuickBooks® import
 - a. One time Setup
 - i. Save Import Settings
 - ii. Download and Install QuickBooks® Web Connector (optional)
 - iii. Download Web Connector Configuration (QWC) file
 - iv. Attaching QWC file to Web Connector
 - b. Import Process
 - i. Initiate Import process from QuickBooks® Web Connector
5. Import Statistics
6. Deleting Imported Data
7. FAQ
8. Troubleshooting
9. Unsupported scenarios

1. Introduction

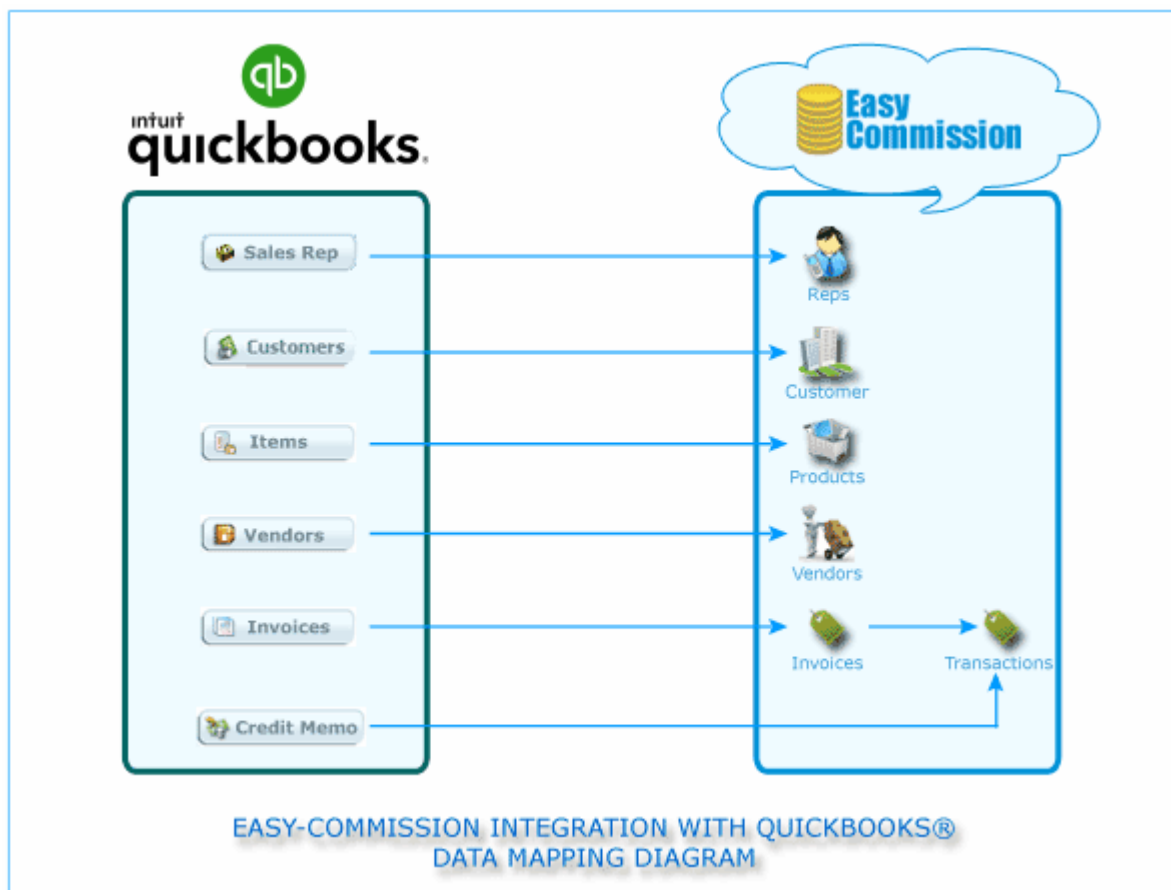
Easy-Commission is using QuickBooks® Web Connector (Intuit provides a connector called “Web Connector” to communicate with Web applications) to integrate data from QuickBooks®. The Web Connector uses a configuration key file (with extension QWC) which contains the configuration settings to exchange data from QuickBooks®. The Import process needs to be initiated from the computer where QuickBooks® and Web Connector reside.

Note: Import of data from QuickBooks® is complex. It would be better to run this process with the help of Consultants. Please [Contact us](#) for further assistance.

2. Import Diagrams:

a) Data Mapping Diagram

- Easy-Commission is importing Reps, Invoices, Customers, Vendors, Items and Credit Memos from QuickBooks®. Imported Invoices will be converted as transactions.



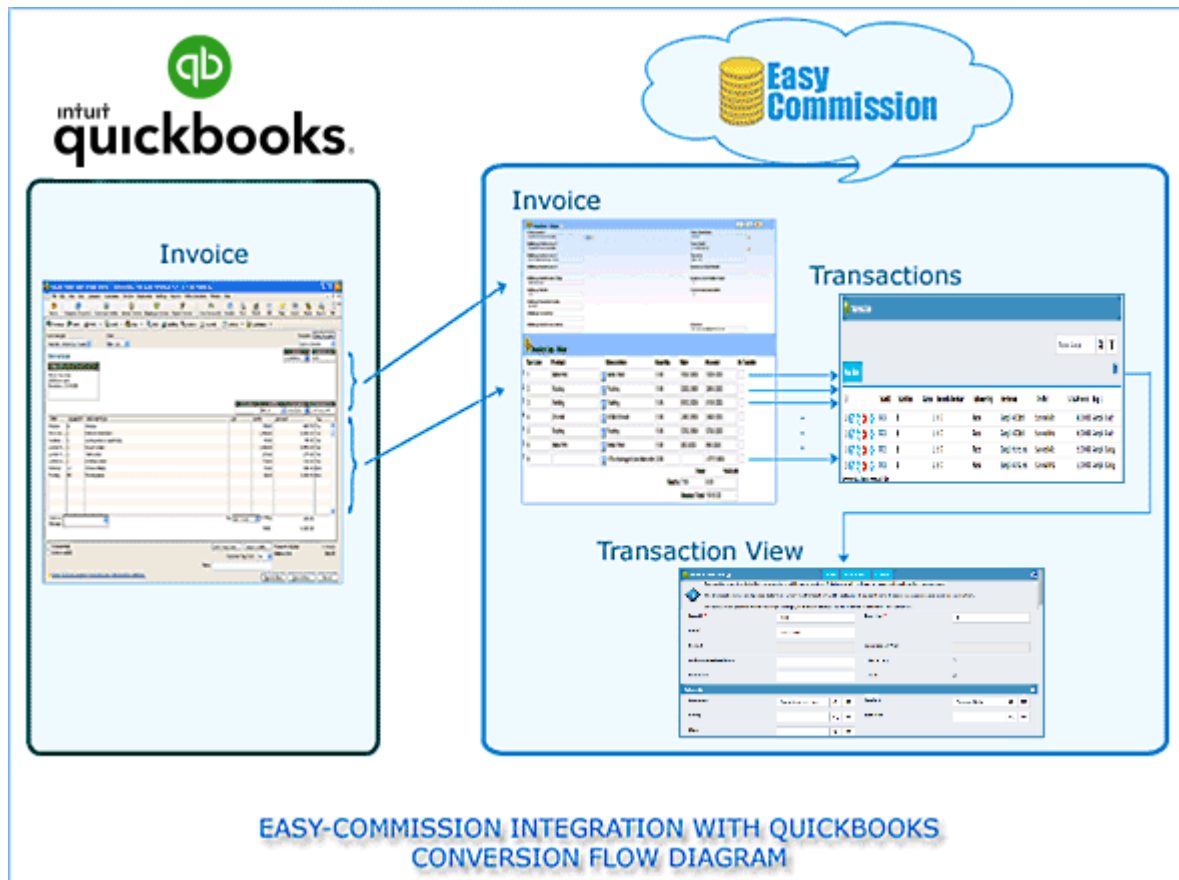
b) Conversion Flow Diagram

Based on the option chosen in the Easy-Commission Import page, Import process will import invoices to EasyCommission and convert those to transactions.

Import options;

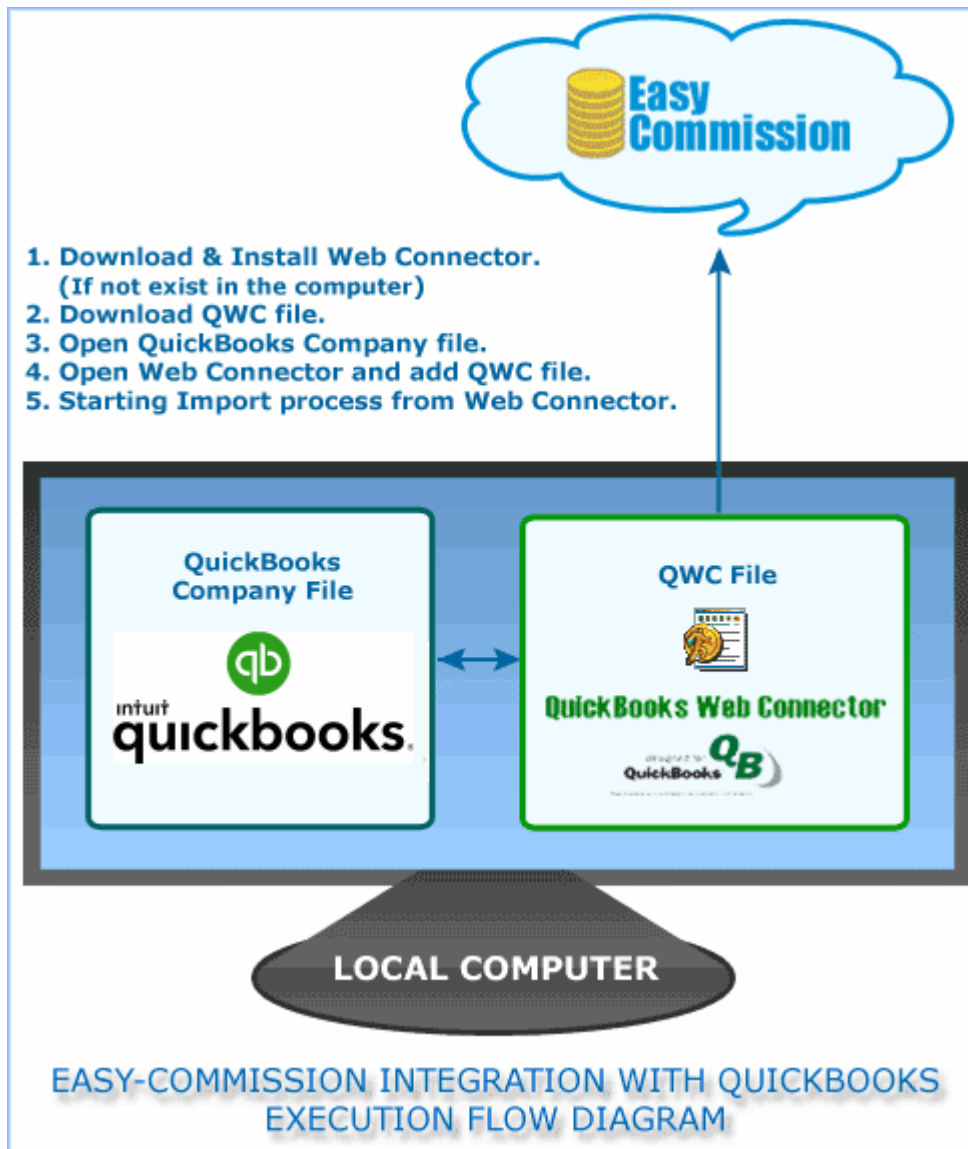
New Invoices >> Imports the invoices with invoice date within current period and converts the imported invoices to transactions.

Paid Invoices >> Imports the fully paid invoices (considers only Receive Payments) that got paid in current period and converts the imported invoices to transactions.



c) Execution Flow Diagram

The QuickBooks® import process involves the following steps to import data from QuickBooks® to Easy-Commission via QuickBooks® Web connector. Here are they,



3. Prerequisites:

To import from QuickBooks®, the computer should have the following things;

1. QuickBooks® Application
- QuickBooks® application needs to be available to import data into Easy-Commission.

2. QuickBooks® Web Connector

- Web Connector needs to be installed if not exists in the computer.

3. QWC file (Web Connector configuration file)

- The configuration file will be downloaded from Easy-Commission Import page and used to initiate the Import process from computer.

4. Steps involved in QuickBooks® import

a) One time setup

i) Import Settings:

Before proceeding with Import process, import settings needs to be saved in Easy-Commission.

The import options are,

>> New Invoices → This option will import all the invoices from QuickBooks® Company file

>> Paid Invoices → This will import all the paid invoices from QuickBooks® company file.

Choose any one of the options based on your commission payment method.

>> Click "**Save**" to store the Import settings.

Import Configuration Wizard

This page allows you to configure the basic setup needed for importing data from QuickBooks. This is a one time setup.

The import process related to this page brings in current period invoices from your QuickBooks® company file. As part of Invoice import, data corresponding to Rep, Customer, Product, Class, Vendor and current period Credit Memos will be imported. Imported invoices will be automatically converted to transactions and Credit Memos will be converted to negative transactions.



Use Delete feature, available in Import Statistics page, to delete the newly imported records. Deleting the last run will enable the prior execution's delete button.

Please follow the steps in "View/Print the Import instructions" page to import data from QuickBooks®.

▶ One Time Setup For QuickBooks Import ▶ After Setup, How to Execute QuickBooks Import for each period

Note: Import of data from QuickBooks® is complex. It would be better to run this process the first time, with the help of Consultants. Please contact us for further assistance.

Import

- New Invoices
- Paid Invoices

1

Within the current period dates (1/1/2017 to 1/31/2017)



View/Print the Import instructions



Configuration Tasks to do on the Local Computer

1. Install Web Connector
2. Open QuickBooks® Company file
3. Attach QWC file to Web Connector
4. Initiate import process from Web Connector



Advanced Options

Consider the below selected field as Territory in Easy-Commission

2

Territory Field

Save Import Settings

Save

Import Statistics

Import tasks to do every period

1. Open QuickBooks® Company file
2. Open the Web Connector
3. Click 'Update Selected' button to start import process.

Save

Import Statistics

✔ Import specifications saved successfully. Please click [here](#) to view the detailed import instructions.

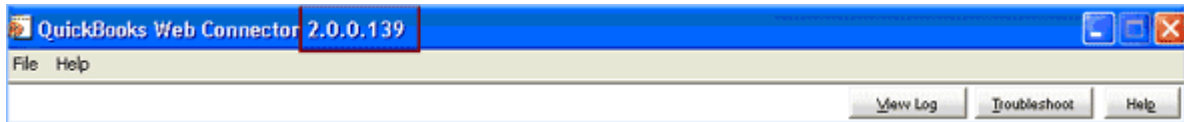
Import tasks to do every period

1. Open QuickBooks® Company file
2. Open the Web Connector
3. Click 'Update Selected' button to start import process.

ii) Download and Install QuickBooks® Web Connector (optional):

Web Connector is an application which enables data exchange between Web applications and QuickBooks®. This is an optional step. To identify QuickBooks® Web Connector is already installed in the system,

- 1) Click **Start → Programs → QuickBooks® → Web Connector**
- 2) Open Web Connector. Verify the version that shows in the top of the application. If it shows version **2.0.0.139** or above, then no need to download and install the Web connector in the computer.



- 3) If the above things are missing in the computer, please download and install Web Connector from EasyCommission Import (**Tools → Import → Import from QuickBooks®**) page.

Import

New Invoices
 Paid Invoices

Within the current period dates (1/1/2017 to 1/31/2017)

Guide

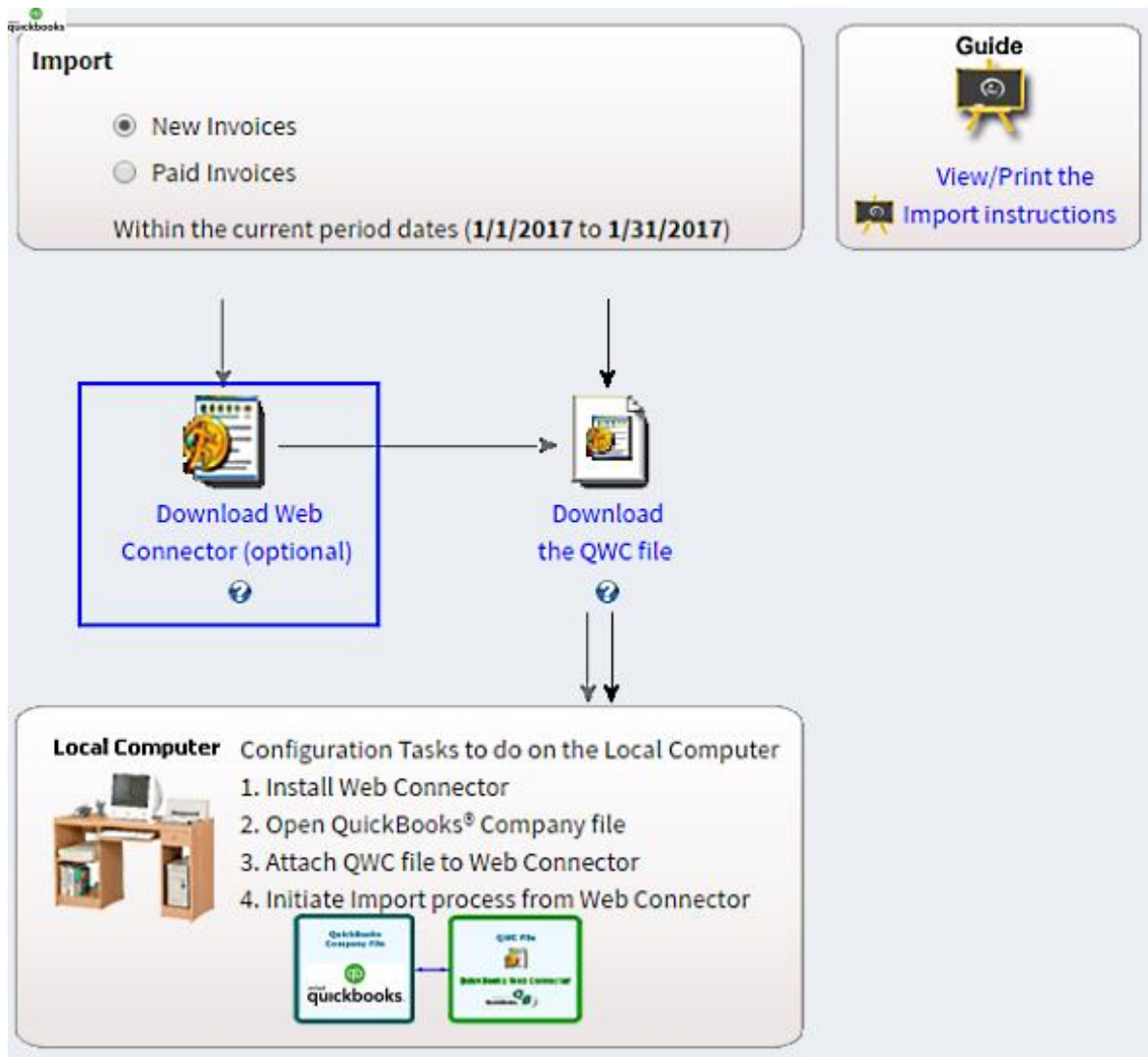
View/Print the Import instructions

Download Web Connector (optional)

Download the QWC file

Local Computer Configuration Tasks to do on the Local Computer

1. Install Web Connector
2. Open QuickBooks® Company file
3. Attach QWC file to Web Connector
4. Initiate Import process from Web Connector



4) Please note that, this is one time activity.

iii) Download Web Connector configuration (QWC) file:

Web Connector configuration file (QWC) file is the key file which is used to communicate the data exchange between Easy-Commission and QuickBooks® via Web Connector.

To download QWC file,

Open the **Tools** → **Import** → **Import from QuickBooks®** page, click the “**Download the QWC file**” link and save it in the computer.

Import

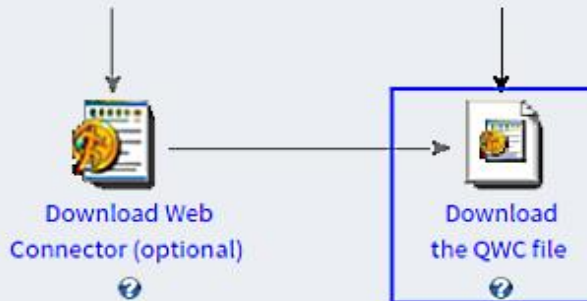
- New Invoices
- Paid Invoices

Within the current period dates (1/1/2017 to 1/31/2017)

Guide



[View/Print the Import instructions](#)



Local Computer Configuration Tasks to do on the Local Computer



1. Install Web Connector
2. Open QuickBooks® Company file
3. Attach QWC file to Web Connector
4. Initiate Import process from Web Connector



0% of import_qb.aspx from www.easy-commission.com

File Download

Do you want to open or save this file?



Name: Easy-Commission_Import.QWC
Type: QuickBooks Web Connector Configuration File, 580...
From: **www.easy-commission.com**

Open

Save

Cancel

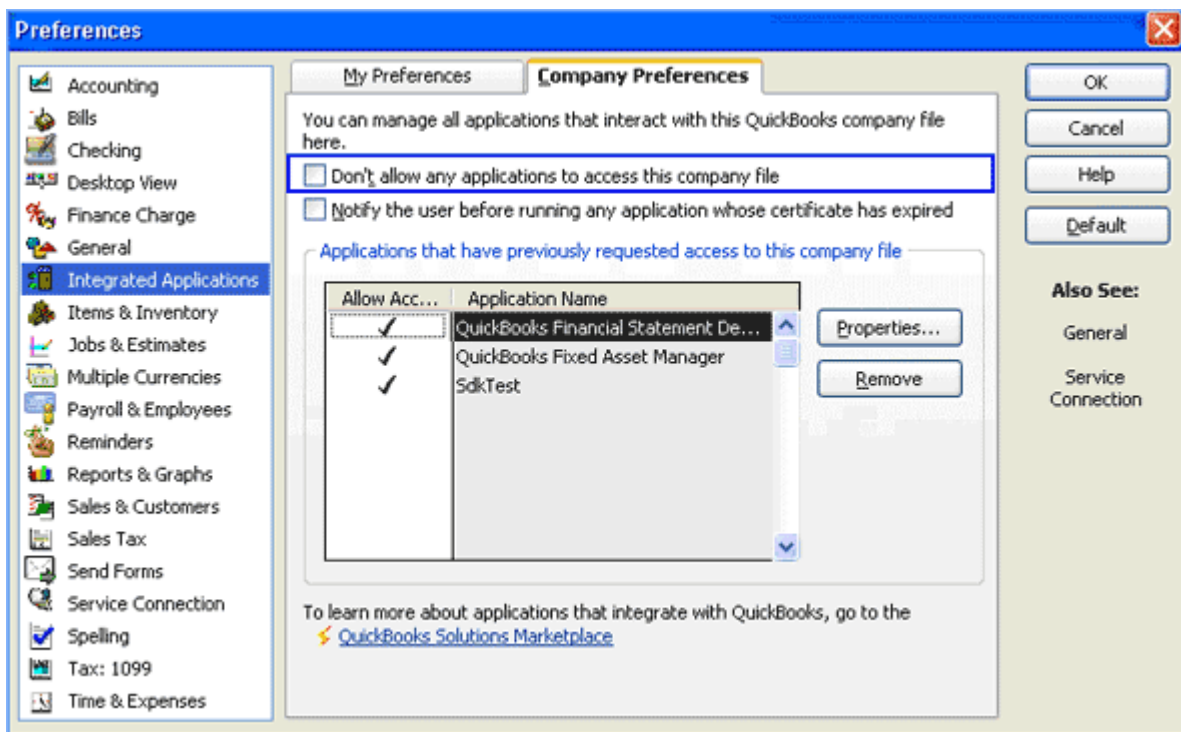


While files from the Internet can be useful, some files can potentially harm your computer. If you do not trust the source, do not open or save this file. [What's the risk?](#)

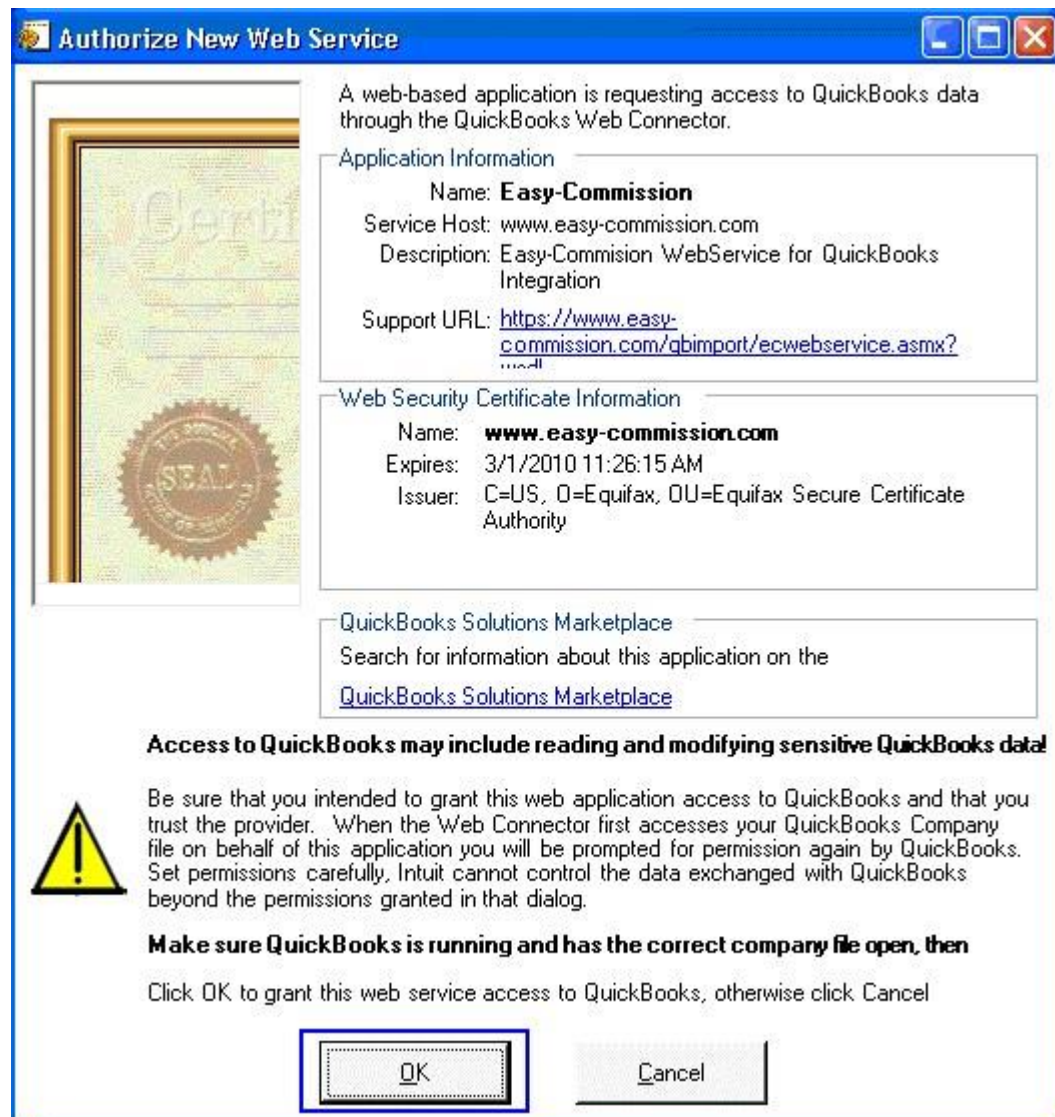
Please note that, this is one time activity. For next execution onwards, you can directly double click/open the downloaded QWC file which is saved locally in the computer and initiate the import process.

iv) Attaching QWC file to Web Connector:

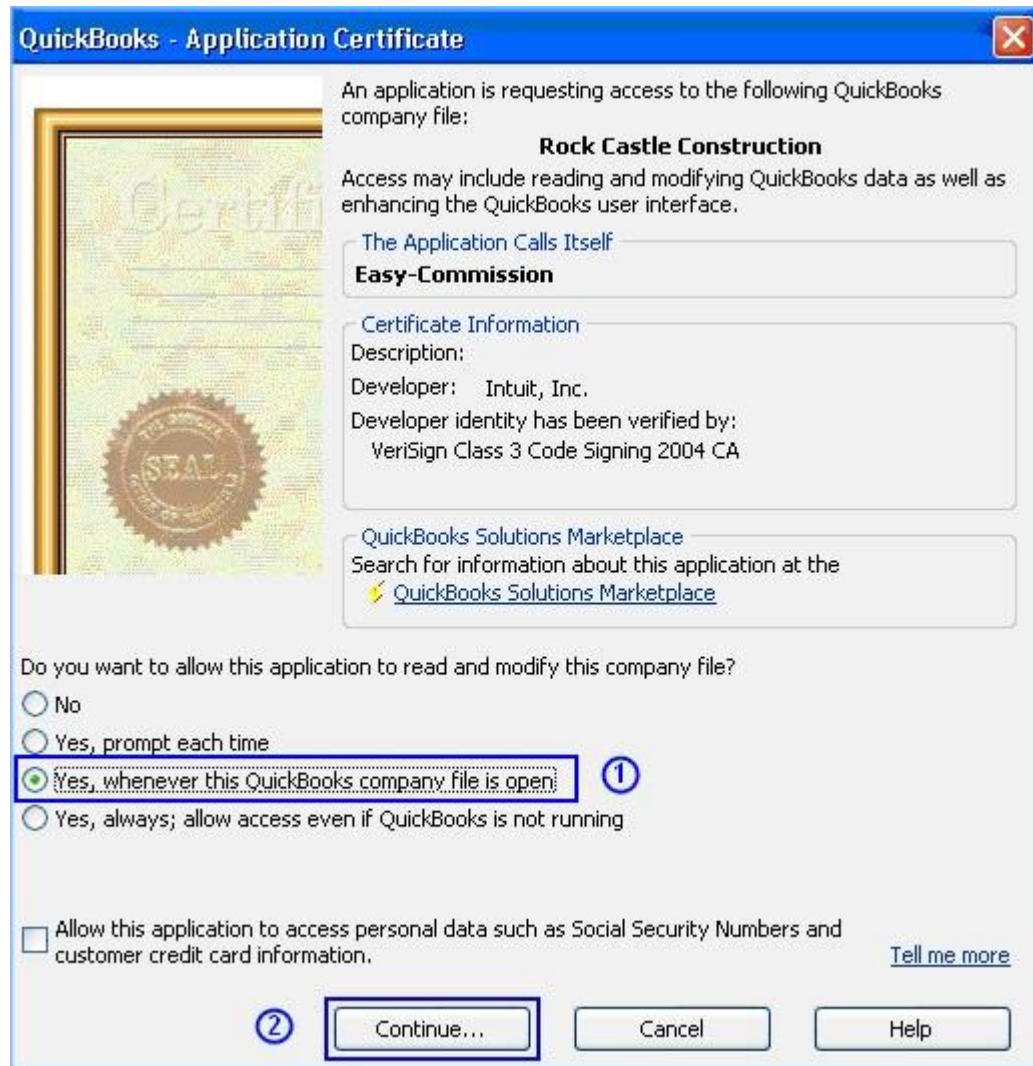
- 1) Open QuickBooks® application and open the Company file which is to be imported in Easy-Commission. - QuickBooks® company file is setup with allowing other applications to access with company file.
 - To verify this, open QuickBooks®, go to **Edit** menu → **Preferences** → **Company Preferences** → **Integrated Applications**.
 - Please make sure, “**Don’t allow any applications to access this company file**” option is unchecked.



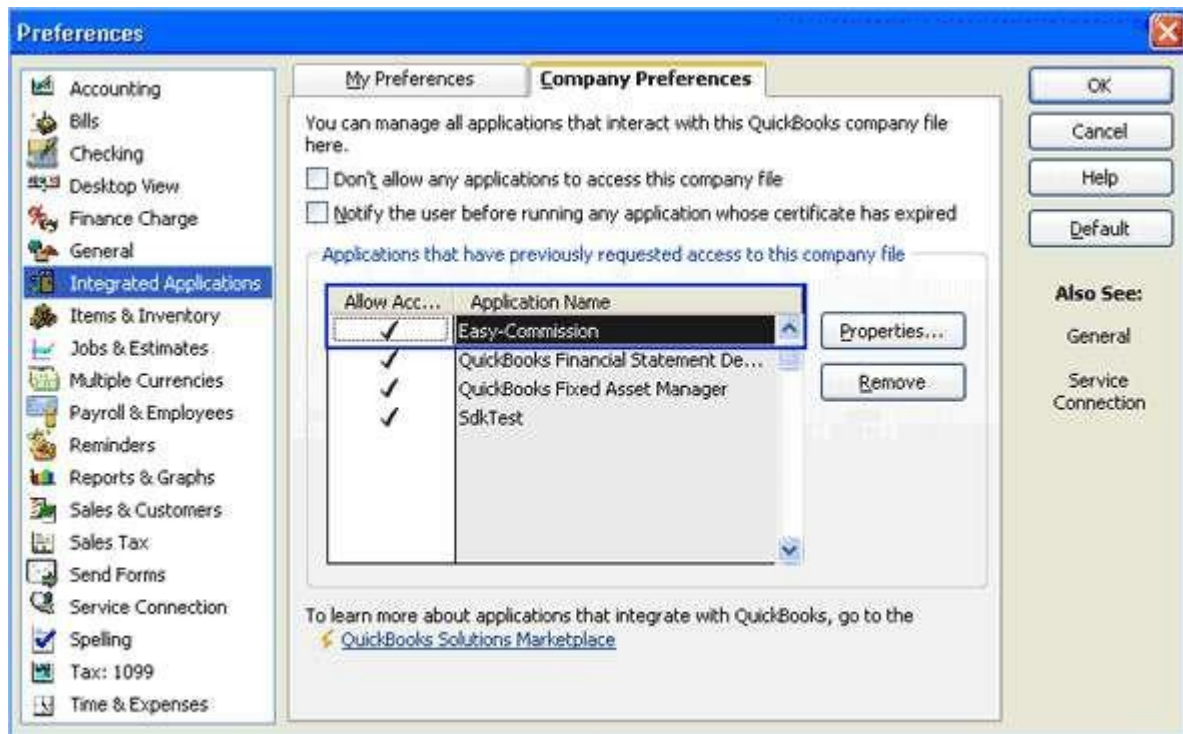
- 2) Double-Click to open the QWC file (that was locally saved in the above step).
- 3) The QWC file will be opened with QuickBooks® Web Connector. After few seconds, a screen will be open up for authorizing web service. Click "**OK**" to continue the process.



After authorizing web service, QuickBooks® will open up a dialog (this will be opened inside QuickBooks® application) for granting permissions for the Integrating applications. Choose "Yes, whenever this QuickBooks® company file is open" option and click "Continue" to proceed the process.



Now Easy-Commission is attached with QuickBooks® for reading data from the company file. The attached application will be shown in QuickBooks® under **Edit** menu → **Preferences** → **Company Preferences** → **Integrated Applications**.



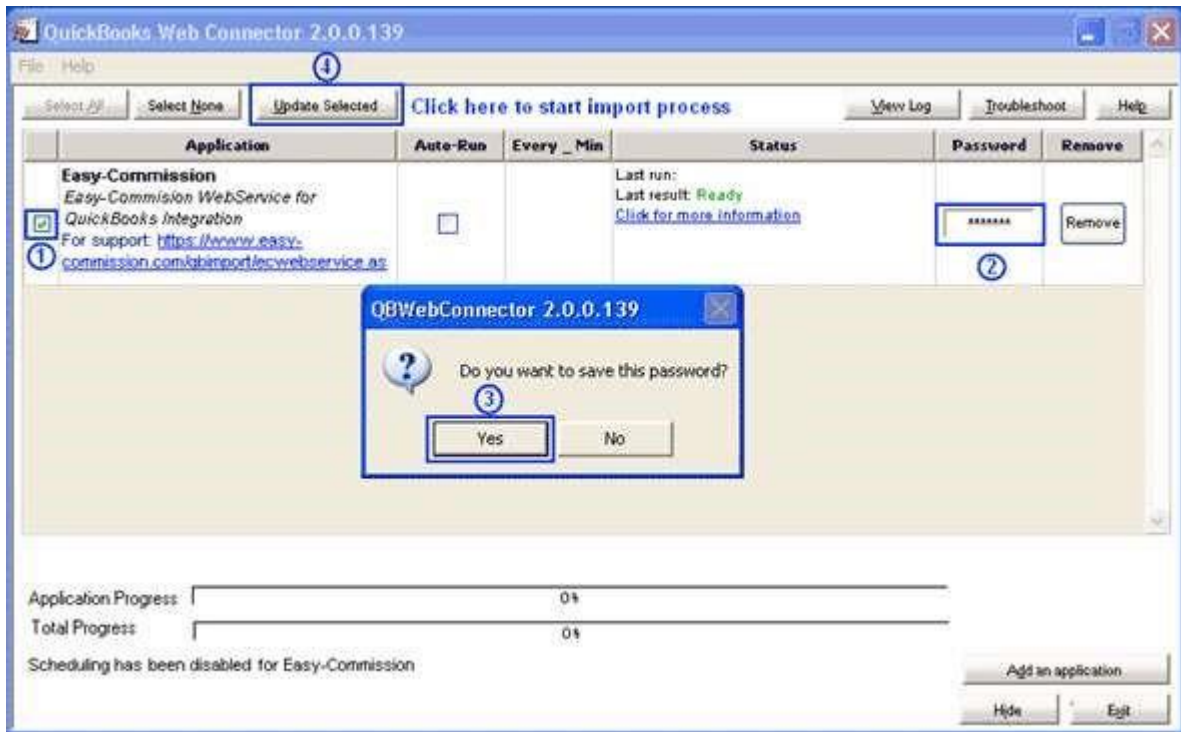
b) Starting import process:

i) Initiate Import process from QuickBooks® Web Connector

After adding QWC file to QuickBooks® Web Connector, the QuickBooks® data import to Easy-Commission needs to be initiated from Web Connector.

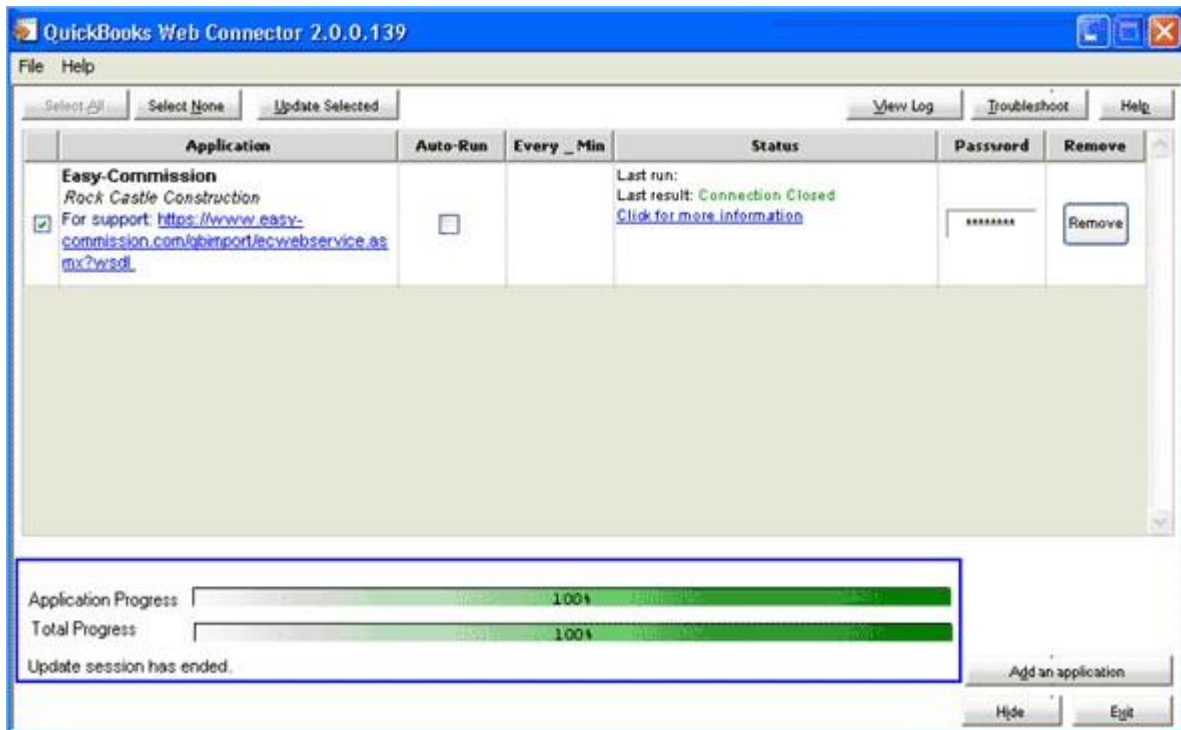
To initiate import process,

- 1) Open QuickBooks® Web Connector
- 2) Choose **“Easy-Commission”** application (point 1 in the below screenshot)
- 3) Enter the Easy-Commission login password in the password box. (point 2 in the below screenshot)
- 4) After entering the password, Web Connector will show a message box for saving password. Choose **“Yes”** or **“No”** based on your desire.
- 5) Click **“Update Selected”** button to initiate the process.



After clicking "**Update Selected**" button, QuickBooks® Reps, Invoices, Customers, Vendors, Items and Credit Memos have been started exporting from QuickBooks®.

The progress of exporting data from QuickBooks® will be shown in the Web Connector GUI.



Once the QuickBooks® Web Connector status reaches "100%", QuickBooks® data import process is partially completed. EC will start showing imported data within couple of minutes.

5. Import Statistics:

Once the QuickBooks® import is done, imported records statistics will be shown in the Easy-Commission QuickBooks® import page.

To view the statistics,

- 1) Open the **Tools** → **Import** → **Import from QuickBooks®** page in Easy-Commission.
- 2) The import statistics page contains the information about number of Reps, Invoices, Customers, Vendors, Items and Credit Memos that have been imported from QuickBooks®, number of errors if occurred any and error details.

Import Configuration Wizard

This page allows you to configure the basic setup needed for importing data from QuickBooks. This is a one time setup.

The import process related to this page brings in current period invoices from your QuickBooks® company file. As part of invoice import, data corresponding to Rep, Customer, Product, Class, Vendor and current period Credit Memos will be imported. Imported invoices will be automatically converted to transactions and Credit Memos will be converted to negative transactions.

Use Delete feature, available in Import Statistics page, to delete the newly imported records. Deleting the last run will enable the prior execution's delete button.

Please follow the steps in "View/Print the Import instructions" page to import data from QuickBooks®.

[▶ One Time Setup For QuickBooks Import](#)
[▶ After Setup, How to Execute QuickBooks Import for each period](#)


Note: Import of data from QuickBooks® is complex. It would be better to run this process the first time, with the help of Consultants. Please contact us for further assistance.

Import


- New Invoices
- Paid Invoices

Within the current period dates (1/1/2017 to 1/31/2017)

Guide




[View/Print the Import instructions](#)



Local Computer Configuration Tasks to do on the Local Computer

1. Install Web Connector
2. Open QuickBooks® Company file
3. Attach QWC file to Web Connector
4. Initiate Import process from Web Connector



Advanced Options

Consider the below selected field as Territory in Easy-Commission

Territory Field

[Save](#)
[Import Statistics](#)

Import tasks to do every period

1. Open QuickBooks® Company file
2. Open the Web Connector
3. Click 'Update Selected' button to start import process.

Statistics				
	Execution Time	Success Record Count	Inserted Record Count	Error Record Count
More Info	Delete	3/23/2017 08:48 PM	Rep - 0 Customer - 64 Product - 57 Class - 3 Invoice - 0 Invoice Line - 0 CreditMemo - 0 Vendor - 54	Rep - 0 Customer - 64 Product - 57 Class - 3 Invoice - 0 Invoice Line - 0 CreditMemo - 0 Vendor - 54
Time of Execution: 3/23/2017 08:49 PM				
Import Process: Completed				
Click 'Delete' button to delete all the inserted records in this import. Newly inserted Reqs, Customers, Products, Classes, Vendors, Invoices, Credit Memos and Transactions will be deleted.				
Object:	Req			
Number of records imported:	3			
Number of inserted records:	0			
Number of error records:	0			
Object:	Customer			
Number of records imported:	64			
Number of inserted records:	64			
Number of error records:	0			
Object:	Product			
Number of records imported:	57			
Number of inserted records:	57			
Number of error records:	0			
Object:	Class			
Number of records imported:	3			
Number of inserted records:	3			
Number of error records:	0			
Object:	Invoice			
Number of records imported:	0			
Number of inserted records:	0			
Number of error records:	0			
Object:	Invoice Line			
Number of records imported:	0			
Number of inserted records:	0			
Number of error records:	0			
Object:	Vendor			
Number of records imported:	54			
Number of inserted records:	54			
Number of error records:	0			
Object:	CreditMemo			
Number of records imported:	0			
Number of inserted records:	0			
Number of error records:	0			
Object:	Transaction			
Number of records converted:	0			
Number of InvoiceLine records:	0			
Number of CreditMemo records:	0			
Number of error records:	0			

[Previous](#)

Copyright © 2016-2017 Easy-Commission. All rights reserved.

6. Deleting Imported Data:

Easy-Commission provides an option to delete the inserted records in the Import process. The option is available in the QuickBooks® import statistics page. In case of re-import data, you can delete the existing inserted

records using delete feature. In the “Delete” process, all the inserted Reps, Invoices, Customers, Vendors, Items and Credit Memos and converted Transactions which got inserted in that import process.

- 1) Delete process will not reverse records updated during the QB import process. It affects only new inserts.
- 2) It will not delete the manual entries made in Easy-Commission.
- 3) Once the records are deleted from Easy-Commission, they will not be recovered

Statistics				
	Execution Time	Success Record Count	Inserted Record Count	Error Record Count
Delete	3/23/2017 08:43 PM	Rep - 0 Customer - 64 Product - 57 Class - 3 Invoice - 0 Invoice Line - 0 CreditMemo - 0 Vendor - 54	Rep - 0 Customer - 64 Product - 57 Class - 3 Invoice - 0 Invoice Line - 0 CreditMemo - 0 Vendor - 54	Rep - 0 Customer - 0 Product - 0 Class - 0 Invoice - 0 Invoice Line - 0 CreditMemo - 0 Vendor - 0

Time of Execution: 3/23/2017 08:43 PM

Import Process: Completed

Click 'Delete' button to delete all the inserted records in this import. Newly inserted Reps, Customers, Products, Classes, Vendors, Invoices, CreditMemos and Transactions will be deleted.

Object: Rep
 Number of records imported: 0
 Number of inserted records: 0
 Number of error records: 0

Object: Customer
 Number of records imported: 64
 Number of inserted records: 64
 Number of error records: 0

Object: Product
 Number of records imported: 57
 Number of inserted records: 57
 Number of error records: 0

Object: Class
 Number of records imported: 3
 Number of inserted records: 3
 Number of error records: 0

Object: Invoice
 Number of records imported: 0
 Number of inserted records: 0
 Number of error records: 0

Object: Invoice Line
 Number of records imported: 0
 Number of inserted records: 0
 Number of error records: 0

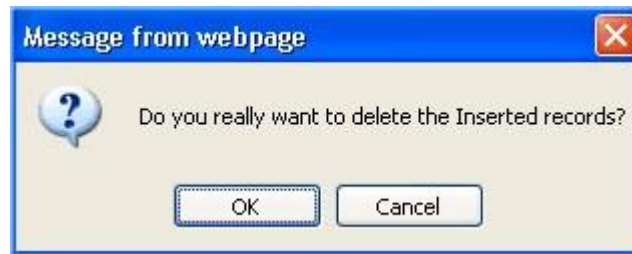
Object: Vendor
 Number of records imported: 54
 Number of inserted records: 54
 Number of error records: 0

Object: CreditMemo
 Number of records imported: 0
 Number of inserted records: 0
 Number of error records: 0

Object: Transaction
 Number of records converted: 0
 Number of InvoiceLine records: 0
 Number of CreditMemo records: 0
 Number of error records: 0

[Previous](#)

After pressing "Delete" button, a confirmation dialog will be displayed. If "Ok" is pressed, then data will be removed from Easy-Commission.



Record Statistics display after deleting the records.

Statistics						
	Execution Time	Success Record Count	Inserted Record Count	Error Record Count	Deleted Record Count	
More Info	Delete	3/29/2017 03:48 PM	Rep - 0 Customer - 64 Product - 57 Class - 3 Invoice - 0 Invoice Line - 0 CreditMemo - 0 Vendor - 54	Rep - 0 Customer - 64 Product - 57 Class - 3 Invoice - 0 Invoice Line - 0 CreditMemo - 0 Vendor - 54	Rep - 0 Customer - 0 Product - 0 Class - 0 Invoice - 0 Invoice Line - 0 CreditMemo - 0 Vendor - 0	Rep - 0 Customer - 64 Product - 57 Class - 3 Invoice - 0 Invoice Line - 0 CreditMemo - 0 Vendor - 54

Time of Execution: 3/29/2017 03:48 PM

Import Process: Completed

Click 'Delete' button to delete all the inserted records in this import. Newly inserted Reqs, Customers, Products, Classes, Vendors, Invoices, CreditMemos and Transactions will be deleted.

Object: Rep
 Number of records Imported: 0
 Number of inserted records: 0
 Number of error records: 0
 Number of deleted records: 0

Object: Customer
 Number of records Imported: 64
 Number of inserted records: 64
 Number of error records: 0
 Number of deleted records: 64

Object: Product
 Number of records Imported: 57
 Number of inserted records: 57
 Number of error records: 0
 Number of deleted records: 57

Object: Class
 Number of records Imported: 3
 Number of inserted records: 3
 Number of error records: 0
 Number of deleted records: 3

Object: Invoice
 Number of records Imported: 0
 Number of inserted records: 0
 Number of error records: 0
 Number of deleted records: 0

Object: Invoice Line
 Number of records Imported: 0
 Number of inserted records: 0
 Number of error records: 0
 Number of deleted records: 0

Object: Vendor
 Number of records Imported: 54
 Number of inserted records: 54
 Number of error records: 0
 Number of deleted records: 54

Object: CreditMemo
 Number of records Imported: 0
 Number of inserted records: 0
 Number of error records: 0
 Number of deleted records: 0

Object: Transaction
 Number of records converted: 0
 Number of InvoiceLine records: 0
 Number of CreditMemo records: 0
 Number of error records: 0
 Number of deleted records: 0

[Previous](#)

7. FAQ

1) How the imported invoices get converted as transaction in Easy-Commission?

Based on the commission payment method that has been chosen in the import page, invoices get converted as transactions.

If Created/modified invoices means, only current period invoices will get converted as transactions. If Paid based invoices means, current period paid invoices will get converted.

2) How QuickBooks® payments are handled in Easy-Commission?

Easy-Commission supports Receive payments only. Rest of the payment types such as Credit Memo, Deposit and General Journal are not supported.

3) Will Reps are imported to Easy-Commission?

Yes. From QuickBooks® Reps which are created from Employee and Vendor will be imported. Other name reps will be ignored in import process.

4) What are the QuickBooks® Item types are supported in Easy-Commission?

Easy-Commission supports following item types in QuickBooks®;

Service, Inventory Part, Non-Inventory Part, Inventory Assembly, Item Group, Other Charge

5) What happens if Invoice number in QuickBooks® is empty?

While importing invoices, if an invoice in QuickBooks® is not having the Invoice number(#) then the Invoice number will be substituted with "[Unknown]". When the invoice number is updated in QuickBooks® it will be populated to Easy-Commission in the re-import process.

6) Will Easy-Commission calculates Gross Profit?

Yes. Easy-Commission calculates Gross Profit for the imported invoices using the formula Sales Amount - Cost where Cost = Quantity * Unit_Cost of Item. Easy-Commission does not look at other cost data such as Purchase Orders or Bills.

7) Will Easy-Commission import invoice lines which do not have item name/quantity?

Yes. If the invoice is missing item and quantity, Easy-Commission will still import that line. But if the invoice line has all these fields as blanks (Item, quantity, price and amount), then the line will be ignored.

8) How do I delete the invoices that got imported wrongly?

Easy-Commission provides a specific "Delete" functionality which will delete all the inserted invoices, reps, customers, vendors, items and credit memos. The "Delete" option will be available in the import statistics page. Caution: only new "inserted" records will be deleted; records that had their values updated, will not be reversed back to their original values.

9) Will closed transactions in Easy-Commission get updated in Import process?

No, closed transactions will not be updated during the Import process. Transactions in Easy-Commission are 'Closed' after commissions are calculated and the commission period is closed out

10) Can I import from multiple QuickBooks® Company files?

No, importing of data from multiple QuickBooks® company files into a single Easy-Commission account is not supported.

11) After starting import process in Web Connector will I able to work in Easy-Commission?

Yes. Since QuickBooks® import process will run as a background process, you are able to work on EasyCommission pages.

12) After reaching “100%” in Web Connector, QuickBooks® data is available in Easy-Commission?

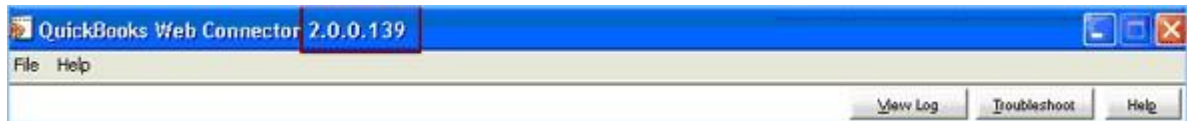
No. Once the Web Connector status reaches "100%", QuickBooks® data import process is partially completed. EC will start showing imported data within couple of minutes

13) What are the supported QuickBooks® versions in Easy-Commission?

For supported editions, please refer <http://www.easy-commission.com/faq.aspx#QuickBooksEditions>

14) I already have QuickBooks® Web Connector. Do I need to download and install again? Easy-Commission supports Web Connector version 2.0.0.139 and above. To verify the version

- Open Web Connector. Verify the version that shows in the top of the application. If it shows version **2.0.0.139** or above, then no need to download and install the Web connector in the computer.



In case of your Web Connector version is less than this, please uninstall the existing version. Download and install the Web Connector from Easy-Commission.

15) Did Easy-Commission import my Credit card and other personal information from QuickBooks®? No. Easy-Commission doesn't import any of the personal information such as credit cards.

16) Does Import process bring the Country information from QuickBooks® file?

Yes. Easy-Commission import the country names from QuickBooks® based on the country name matching. If QuickBooks® country name matches with Easy-Commission country name then its corresponding code will be updated and shown in the customer page.

17) In Import from QuickBooks® feature, how can I exclude the non-commissionable items like shipping charges from getting imported to Easy-Commission?

As part of import from QuickBooks® feature, all of the items will get imported. However, after import, the "Commissionable" flag for non-commissionable items (Ex: Shipping Charges) can be set to "False" in Easy-Commission Product page. It will exclude all relevant sales transactions from getting calculated for commissions. This is just a one-time activity, since subsequent imports will retain this setting.

18) Can I do a manual adjustment to cost before the actual commission is calculated? For example, if the cost carries over from QuickBooks® as \$50, and I want to make it \$60 before the commission is calculated, can I do that?

You can always change the cost of the relevant transactions to \$60; after the data gets imported and before the commission gets calculated.

19) We will have charge backs/refunds as part of our business and we create credit memos in QuickBooks®; Does Easy-Commission imports credit memo?

Yes. As part of invoice import, Easy-Commission brings in the credit memos too.

20) We create invoices based on item group; would Easy-Commission brings in those invoices?

Yes. As part of invoice import, Easy-Commission brings in the Item-Group related invoice into Easy-Commission. Each line in the group would be created as a separate transaction.

8. Troubleshooting

Error Code	Issue/Question	Cause	Solution
	Update aborted. Problem locking company file	Web Connector locks the company file when it is attached. Without removing the QWC file, trying to add another company file error occurred.	Open company file. Remove the QWC file from Web Connector. Open another company file, add the QWC file and continue the import process.
QBWC 1053	QuickBooks® Web Connector failed to connect. QuickBooks® returned the following error: <QBWC 1053: A modal dialog box is showing in the QuickBooks® user interface>. Fix the problem and click OK to try again.	A modal dialog is opened in the QuickBooks® company file.	Close the modal dialog in QuickBooks® company file and restart the QWC attaching process.
QBWC 1039	There was a problem adding the application. Check QWCLog.txt for details. Error connecting to QuickBooks®. Error message received from QuickBooks® was <if the QuickBooks® company data file is not open, a call to the "Begin Session" must include name of the data file>. If you do not have QuickBooks® installed on this system , you would need to install it before running web connector	QuickBooks® company file is not opened before attaching QWC file to Web Connector.	Open QuickBooks® company file which is to be imported. Attach the QWC file to Web Connector. Still the problem exists please contact Easy-Commission support .
QBWC 1039	There was a problem adding the application. Check QWCLog.txt for	QuickBooks® Company file doesn't setup with allowing	Open QuickBooks®; go to Edit menu → Preferences →

	<p>details. Error connecting to QuickBooks®. Error message received from QuickBooks® was <This application does not have permission to access this QuickBooks® company data file. The QuickBooks® administrator can grant access permission through the integrated Application preferences>. If you do not have QuickBooks® installed on this system , you would need to install it before running web connector</p>	<p>other applications to interact with data.</p>	<p>Company Preferences → Integrated Applications.</p> <p>Please make sure, “Don’t allow any applications to access this company file” option is Unchecked.</p> <p>Still the problem exists please contact Easy-Commission support.</p>
QBWC 1039	<p>There was a problem adding the application. Check QWCLog.txt for details. Error connecting to QuickBooks®. Error message received from QuickBooks® was <The QuickBooks® user has denied the access >. If you do not have QuickBooks® installed on this system , you would need to install it before running web connector</p>	<p>This is due to not granting permission to EasyCommission, while attaching the QWC file with Web Connector</p>	<p>QuickBooks® will open up a dialog (this will be opened inside QuickBooks® application) for granting permissions for the Integrating applications. Choose “Yes, whenever this QuickBooks® company file is open” option and click “Continue” to proceed the process. Still the problem exists please contact Easy-Commission support.</p>
QBWC 1039	<p>There was a problem adding the application. Check QWCLog.txt for details. Error connecting to QuickBooks®. Error message received from QuickBooks® was <This application has not accessed this QuickBooks® company data file before. The QuickBooks® administrator must grant an application permission to access a QuickBooks® company data file for the first time >. If you do not have QuickBooks® installed on this system , you would need to install it before running web connector</p>	<p>This is due to having administrator rights to grant permission for EasyCommission</p>	<p>Open QuickBooks® company file in single user mode with QuickBooks® Administrator login. Attach the QWC file to QuickBooks® and grant the permission for EasyCommission.</p> <p>Still the problem exists please contact Easy-Commission support.</p>
QBWC 1026	<p>There was some problem adding fileID.</p>		<p>Please contact Easy-Commission support.</p>
QBWC 1040	<p>Invalid password for username. Web connector did not provide a valid username and/or password.</p>	<p>Invalid password is given</p>	<p>Provide Easy-Commission login password correctly</p>
QBWC 1041	<p>SendRequestXML failed due to error message<error message></p>		<p>Please contact Easy-Commission support.</p>

QBWC 1042	ReceiveResponseXML failed due to error message<error message>		Please contact Easy-Commission support .
QBWC 1043	getLastError failed due to error message<error message>		Please contact Easy-Commission support .
QBWC 1044	CloseConnection failed due to error message<error message>		Please contact Easy-Commission support .
	QB web connector throws "Error!"		Please contact Easy-Commission support .
QBWC 1048	QuickBooks Web Connector could not verify the web application server certificate		Please contact Easy-Commission support .

®

9. Unsupported Scenarios

Easy-Commission is not supporting the following scenarios currently. They are,

- i) While import invoices, Easy-Commission doesn't support Adjustments (prior period invoices gets modified in current period, etc), Voiding invoices scenarios.
- ii) For fetching Paid invoices Easy-Commission doesn't consider payments happening through Credit memo, Deposit and Journal payments.
- iii) Data from other objects such as Sales order, Bills, Estimates, Checks, Purchase Orders, Sales Receipts data are not imported to Easy-Commission.
- iv) Scenarios like, making Invoice paid by setting up discounts are not handled.